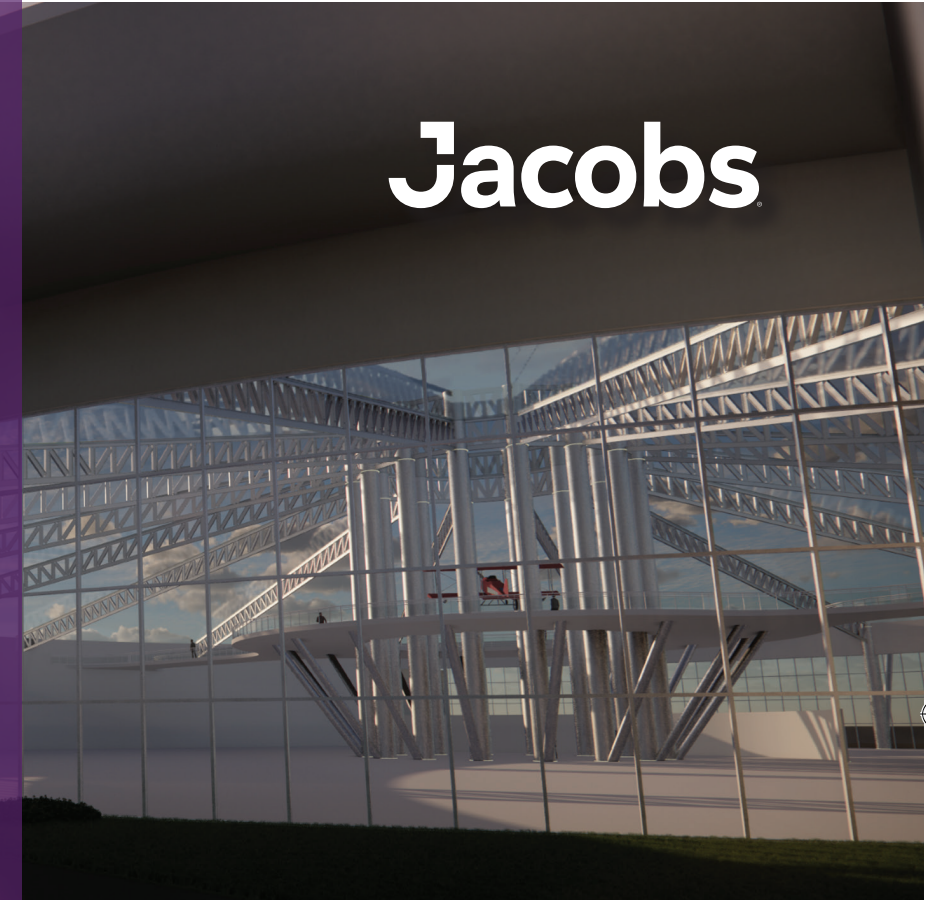


Project Facts

The Titusville/Cocoa Airport Authority (TCAA) owns and operates Exploration Spaceport in Titusville, Florida. The premium location of Exploration Spaceport offers TCAA a unique advantage in attracting business and potential tenants in a thriving aerospace community due to its proximity to Port Canaveral, Kennedy Space Center, Cape Canaveral Space Force Station, Cocoa Beach, and Orlando tourist attractions, as well as convenient access to I-95, State Road 528 (Beachline Expressway), U.S. Highway 1, and rail lines.

TCAA developed a 20-year Master Plan with Jacobs that optimizes commercial, leasable space for a multitude of aerospace activities, such as manufacturing, processing, assembly, testing, multi-use high-bay, storage, warehouse, hangar, and office spaces. These development scenarios present maximum flexibility in space types for Spaceport tenants.

BY THE NUMBERS

1.9M Leasable Sq Ft

- Custom Development
- Start Ups
- Incubator Space
- Manufacturing
- Assembly
- Processing
- Testing
- Flexible Office / SCIF
- Research & Development
- Warehousing & Distribution

Global Space Market Forecast in USD Billions (2021 vs 2040)

Total Market Size in 2021= USD 469.3 Billion **Total Market Size in 2040 = USD 1 Trillion**

For more information contact:

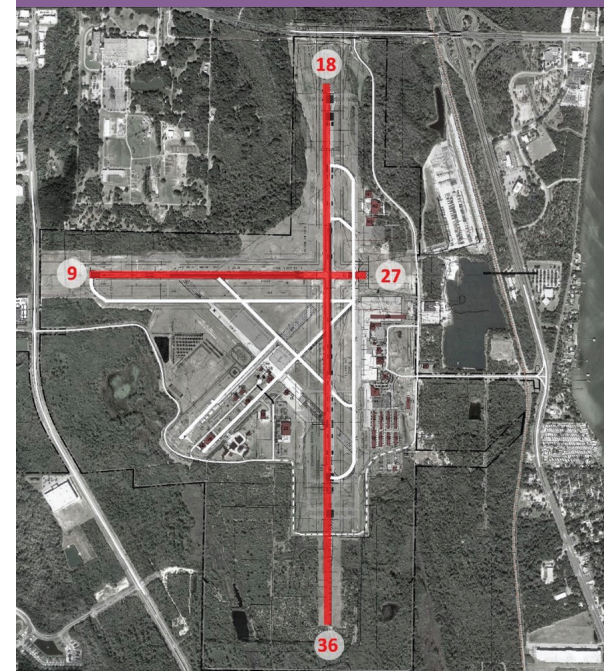
Kevin Daugherty, A.A.E.
Director of Exploration Spaceport
(321) 267 - 8780
kdaugherty@flyspacecoast.org

Tricia Quinn, AAIA, IIDA, MS
Principal
(407) 620 - 8571
Tricia.quinn@jacobs.com

Lisa Nicholas, MPA/U&RP
Business Development Manager
(321) 795 - 6267
lnicholas@flyspacecoast.org

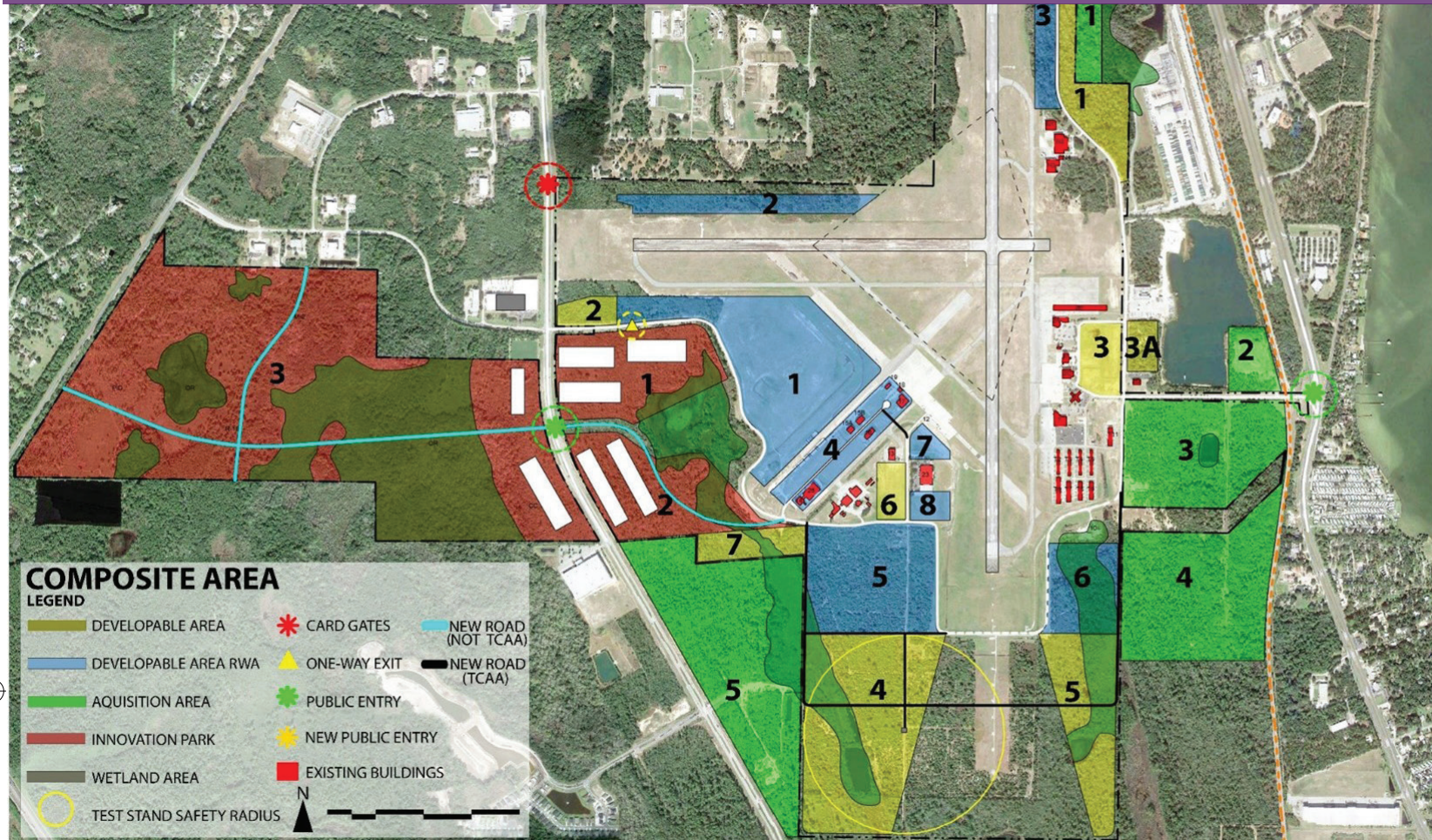
Kevin Kuehn, AIA, AICP
Manager of Architecture
(407) 451 - 1984
Kevin.kuehn@jacobs.com

Exploration Spaceport Master Plan 2024

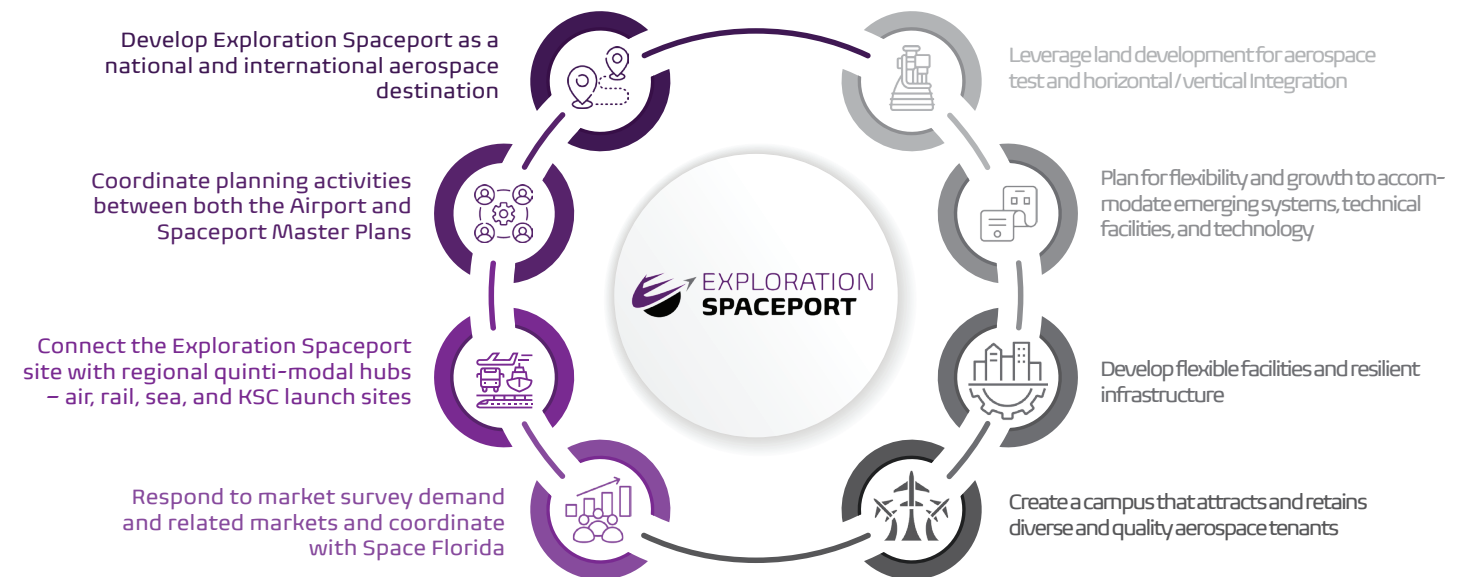


DEVELOPABLE ACRES

VISION



The Exploration Spaceport Master Plan will provide unique opportunities for diverse aerospace business growth and unparalleled customer experiences, land development that creates a fiscally sustainable TCAA business model, business partnerships within the Central Florida region, and a destination for national and international aerospace research, testing, assembly, and potential launches.



BY THE NUMBERS

1,500+ Developable Acres

- Runway Access
- Non-Runway Access
- Public Access
- Potential Secured Areas
- Space Coast Innovation Park (SCIP)
- Campus Opportunities
- Multiple-Use Zoning

Project Facts

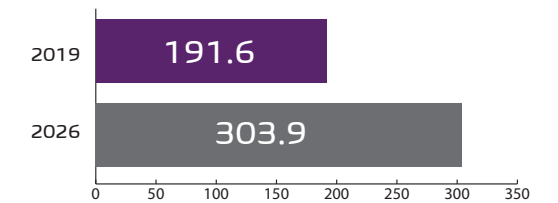
Land Developable analysis helped to identify approximately 1,500 available acres at the Spaceport. The Master Plan also identified 1,905,133 leasable square feet for TCAA to lease to existing and future tenants.

Benefits of coming to Exploration Spaceport:

- Master Plan ensures 20-year vision
- Strategic Implementation plan
- Proximity to Kennedy Space Center
- Transportation gateway
- Potential Point-To-Point launch area
- Spaceport terminal
- Lease Spaceport constructed buildings
- Lease Spaceport land
- Build-to-suit facilities



Space Tourism Market in the US in USD Millions (2021 to 2026)



Global Space Freight and Logistics Market Forecast in USD Billions (2031)

Total Market Size in 2031 = USD 4.4 Billion

Quinti-Modal Opportunities

